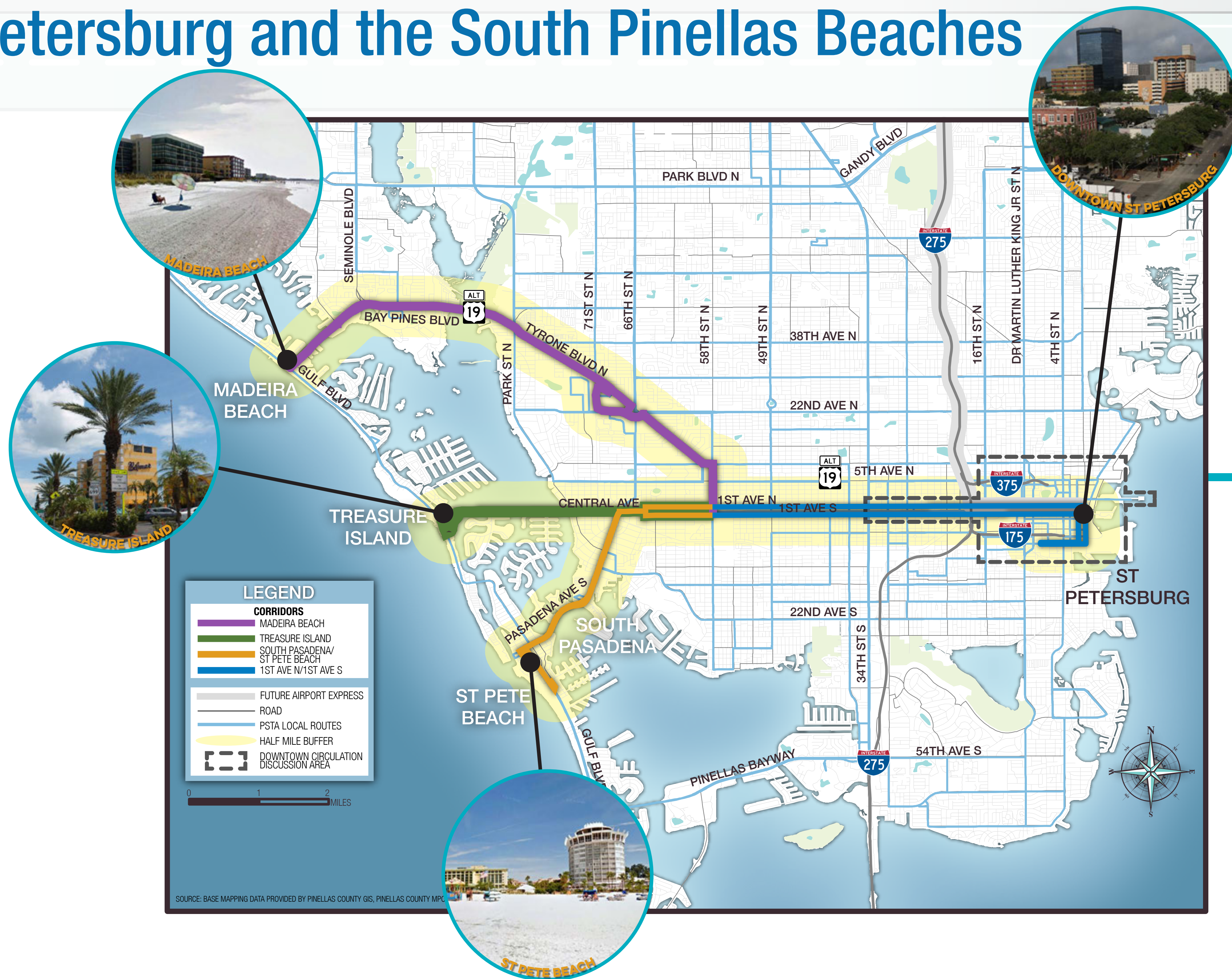


ABOUT THIS PROJECT

DRAFT 7/27/2016

What is the project?

Bus Rapid Transit (BRT) service between Downtown St. Petersburg and the South Pinellas Beaches



What are the project goals?

- Support economic development and jobs
- Support tourism with a fast, convenient service
- Attract new ridership
- Support the unique character of the area
- Provide cost-effective service

What is BRT?

- Rapid transportation that provides the quality of rail with the flexibility of buses
- Buses run in their own lanes or with traffic signal priority
- Stations have shelters and off-board ticketing or mobile pay
- Service is frequent and reliable with long hours on weekdays and weekends
- Buses and stations have unique branding



BUS-ONLY LANE



UNIQUE BRANDING



TRAFFIC SIGNAL PRIORITY



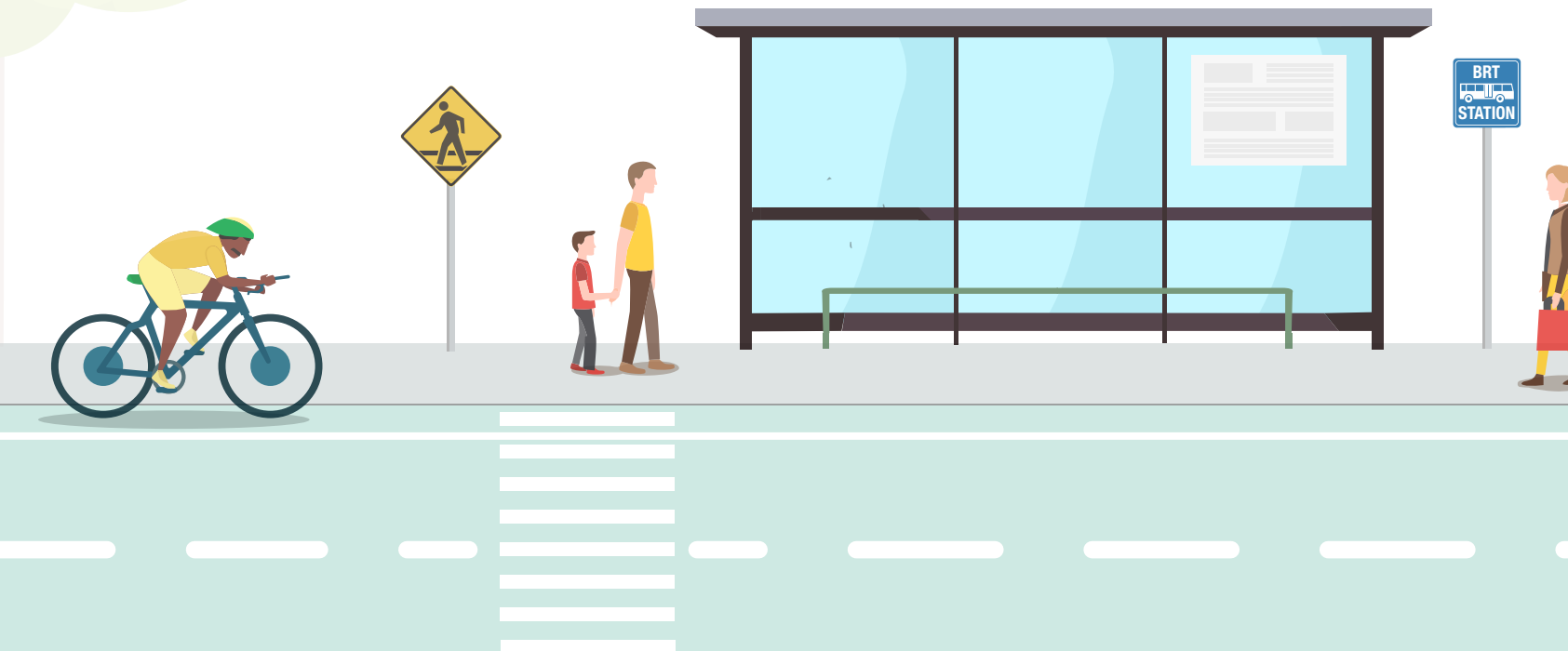
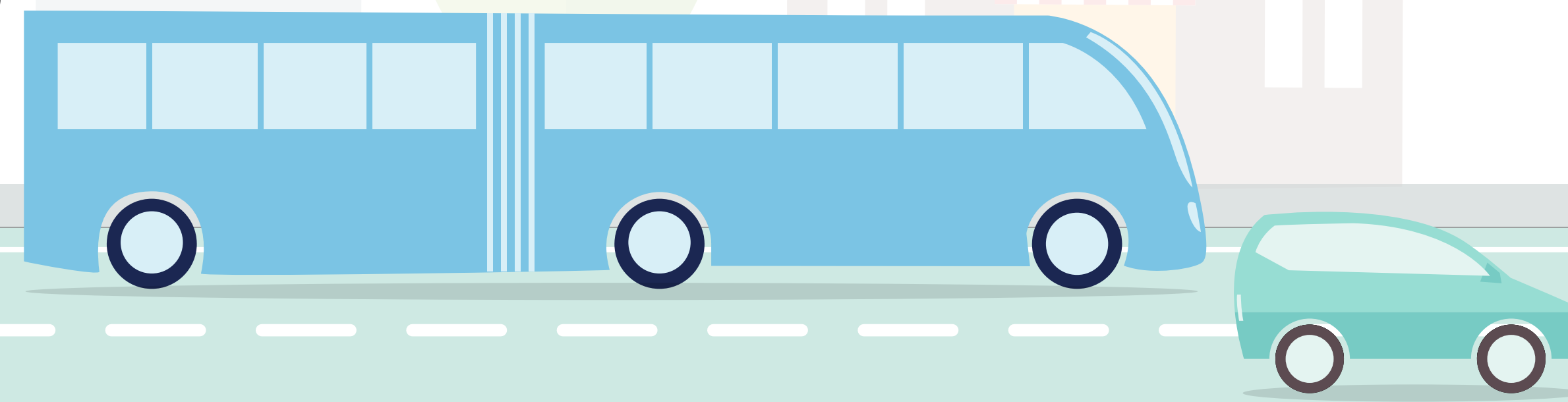
FREQUENT SERVICE



STATIONS WITH SHELTERS

YOUR VOICE

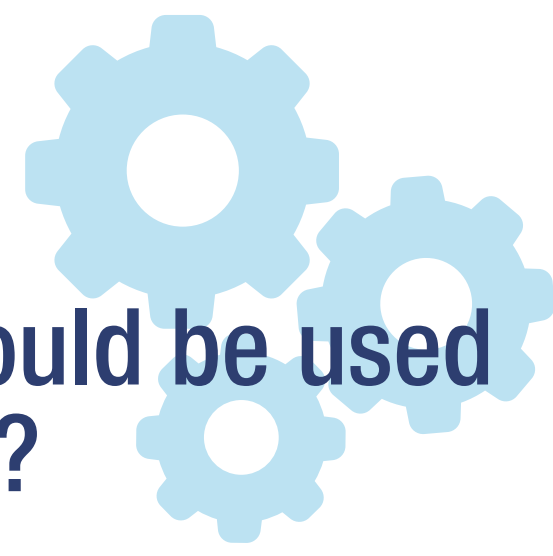
What's most important to you?



ILLUSTRATIONS COMPILED FROM FREEMIX AND VECTEZY

FIT

How much of the corridor could be used for continuous BRT features?



SPEED

How quickly can you get between Downtown St. Petersburg and the beaches?

Where is there traffic congestion?



ACCESS

How safe is the corridor to drive?

How easily can you get to the stations by bike or on foot?



MARKET

How well does the corridor serve residents? workers? visitors? and people without cars?



COMPETITIVE

Will the service allow people to drive fewer miles?

How many people will use the service?

